

Kyochu Trading

<http://www.kyoling.net>



1、 We import medical devices from our own factory in China and sell it to Japan.

2、 We have our own joint venture factories in China with 200 and 150 employees. They have acquired FDA and CE standards. These factories export 60% to Europe, USA, Arab, and the remaining 40% ship to China.

3. We can support for pharmaceutical and medical device law

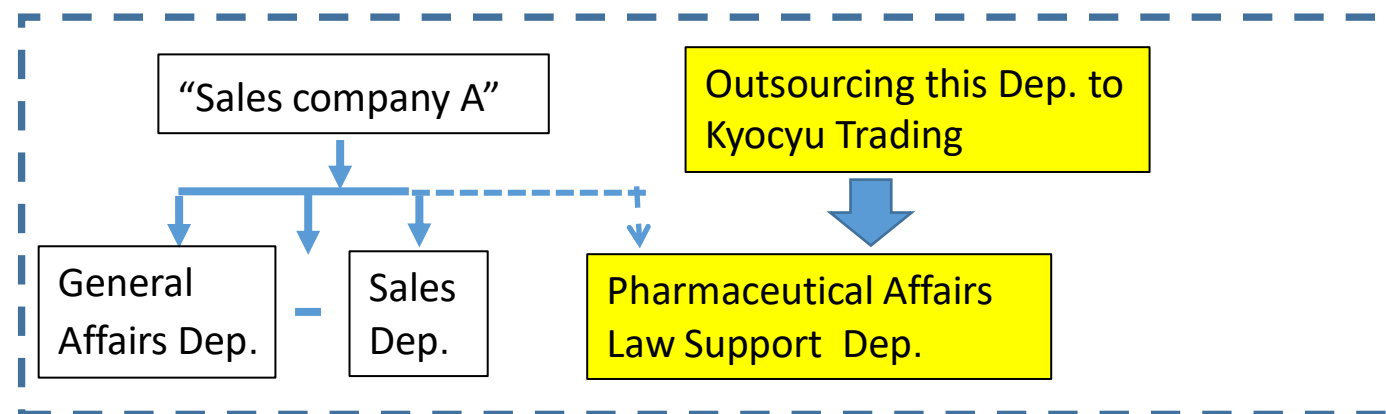
◎ We have a business model as actual result of "Electronic thermometer with character model " .

◎ To import and sell medical devices, you need licenses shown in the right table ①②③.

◎ Professional personnel is necessary to manage your business

◎ If you outsource its function to "Kyochu Trading", we can support to make "sales company A" (your company) in the figure below as if you were a medical device manufacturer.

◎ "Sales company A"(your company) is indicated by simulated medical device manufacturer.



President: Kikue Oda

Establishment: 1993 -12-12
(Medical device Field 2009 ~)

Capital: 10 million yen

Sales: 40 million yen
(About 1000 million yen for the entire group)

Main products: Disposal medical device

Website Address : <http://kyoling.net>
office@kyoling.net

In order to import medical device from overseas and sell them to the Japanese market, the following licenses are necessary. We have obtained them from the Ministry of Labor and Welfare.

① Type 1 license (The highest class)

medical device manufacturing and selling business

Authorization number: 26B1X10007

② Medical device manufacturing license

Authorization number: 26BZ200025

③ Advanced medical device sales and rental business license

Authorization number: 90883